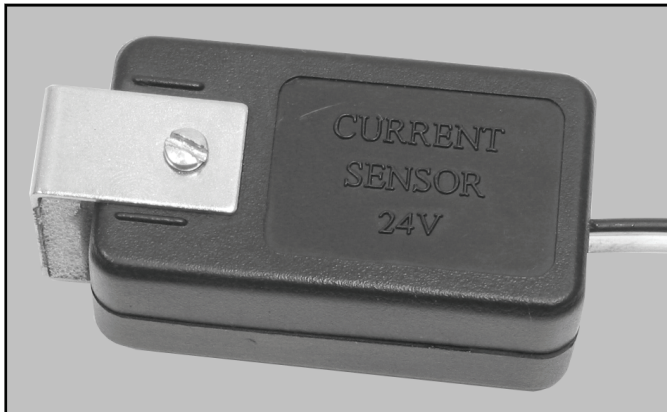


# A50

## Current-Sensing Relay



### Features & Benefits

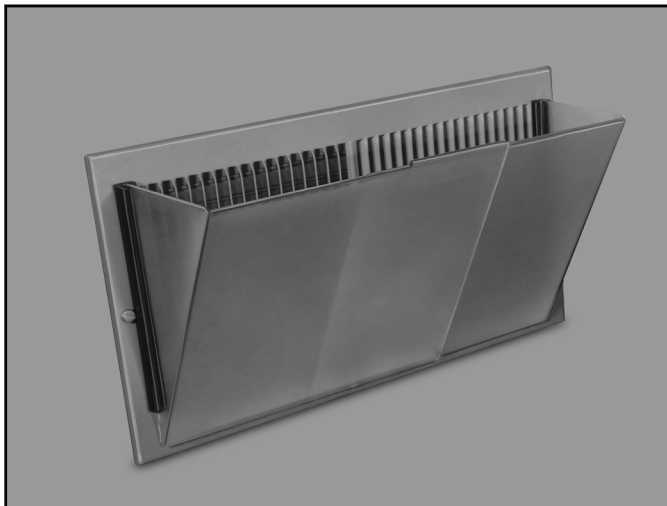
- **Activates or controls electrically-activated humidifiers, make-up air controls, air cleaners, zone dampers and more**
- **Can be installed on any 120 or 240 VAC multi-speed blower** to coordinate operation of the HVAC accessory with the furnace
- **Engineered for safety**—protective rubber guard separates current-bearing wire from steel bracket/ does not invalidate existing equipment warranty
- **Easy to wire and install**

### Specifications

- Dimensions..... 2-3/4" wide x 1-5/16" high x 1-1/16" thick
- 24 volt circuit; maximum current load = 1 amp

# AF-3

## Skuttle Air Flector



### Features & Benefits

- **Directs heated and cooled air** for optimum comfort and efficiency
- **Fits registers from 9" to 17"**
- **Works on floor, ceiling and wall registers**
- **Employs extra-powerful magnets** to hold Air Flector in place, even on painted registers
- **Features an attractive etched surface** that won't show dust or scratches
- **Superior to most air deflectors** sold in retail stores

### Specifications

- Dimensions (closed).....9" wide x 7" deep x 3-1/2" high